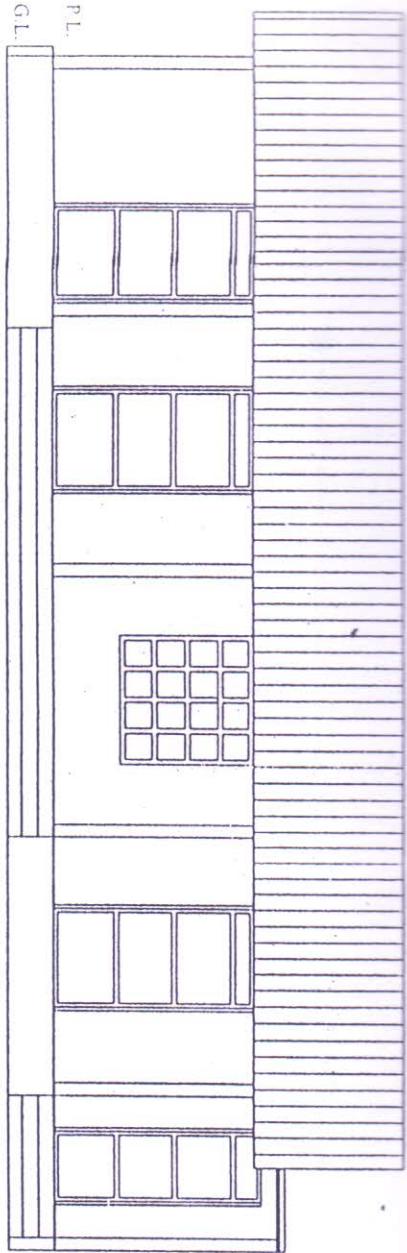
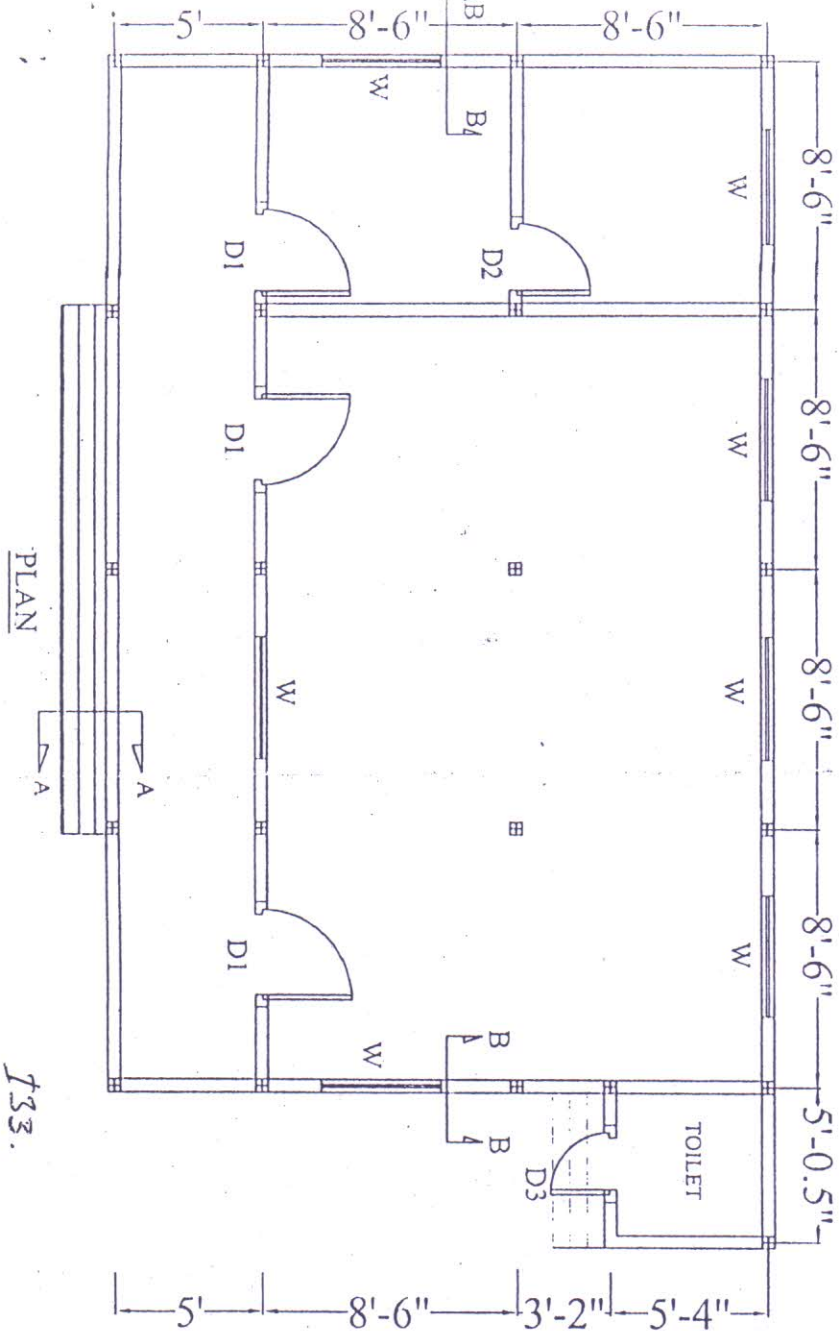
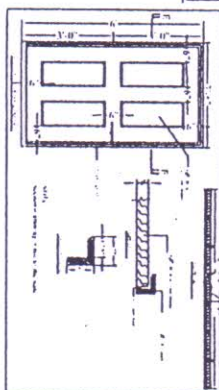
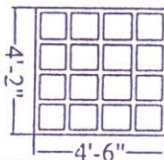
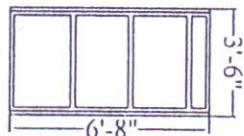


Plan and Elevation of Community Center
(ASRAYAN-2 PROJECT)



FRONT ELEVATION



PLAN

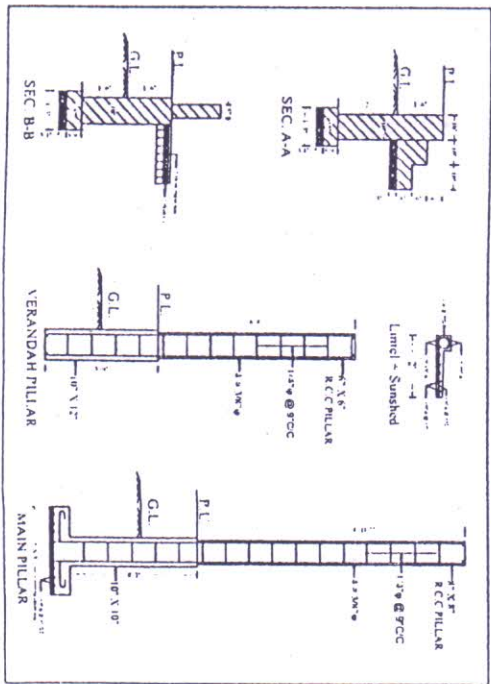
133.

১৩৩
আবদুল আজিজ কোদী
আবদুল শফিকুল
আবদুল হক (সেক-২)
আবদুল হক
আবদুল হক

SIZE OF DOOR & WINDOW

- D1 = 3'-6" X 6'-6"
- D2 = 3'-0" X 6'-6"
- D3 = 2'-6" X 6'-6"
- W = 4'-0" X 4'-6"

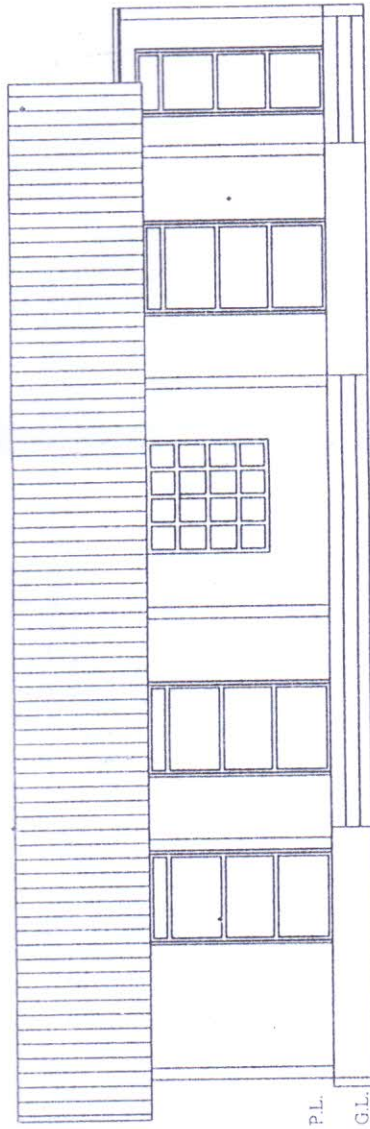
PLINTH AREA = 795 SFT



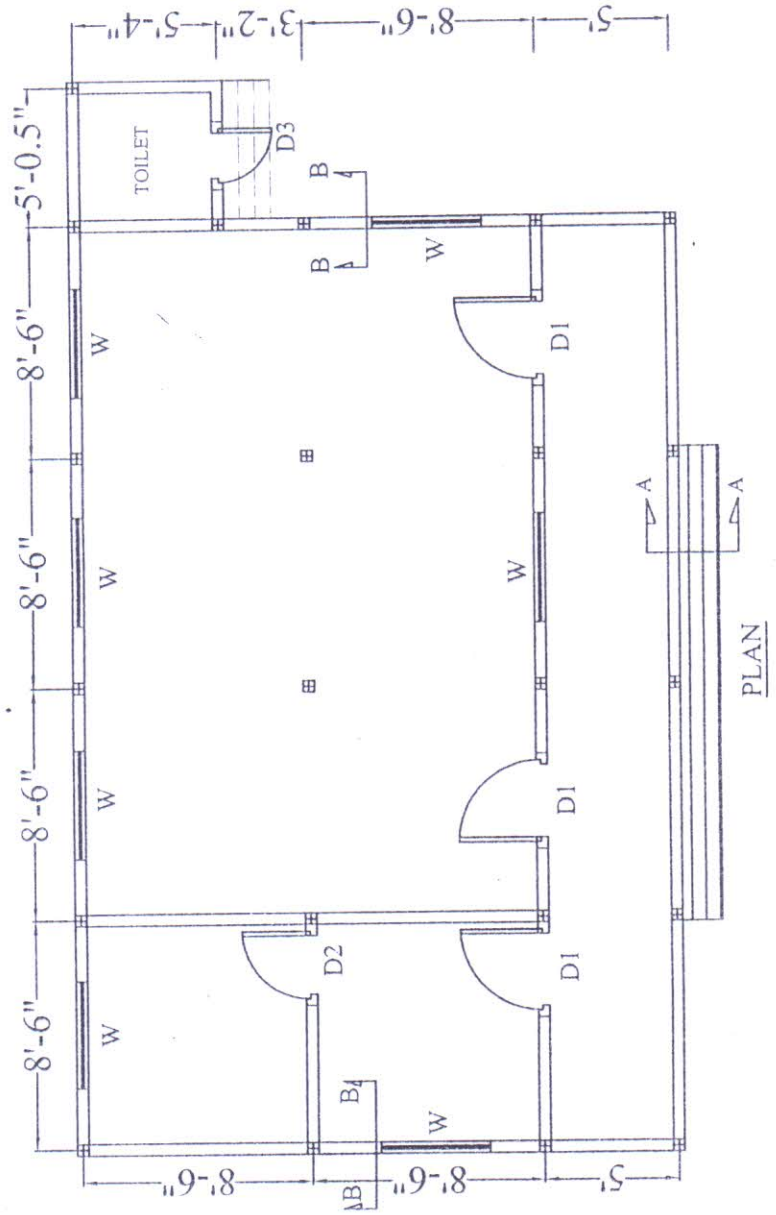
BK

Plan and Elevation of Community Center

(ASRAYAN-2 PROJECT)



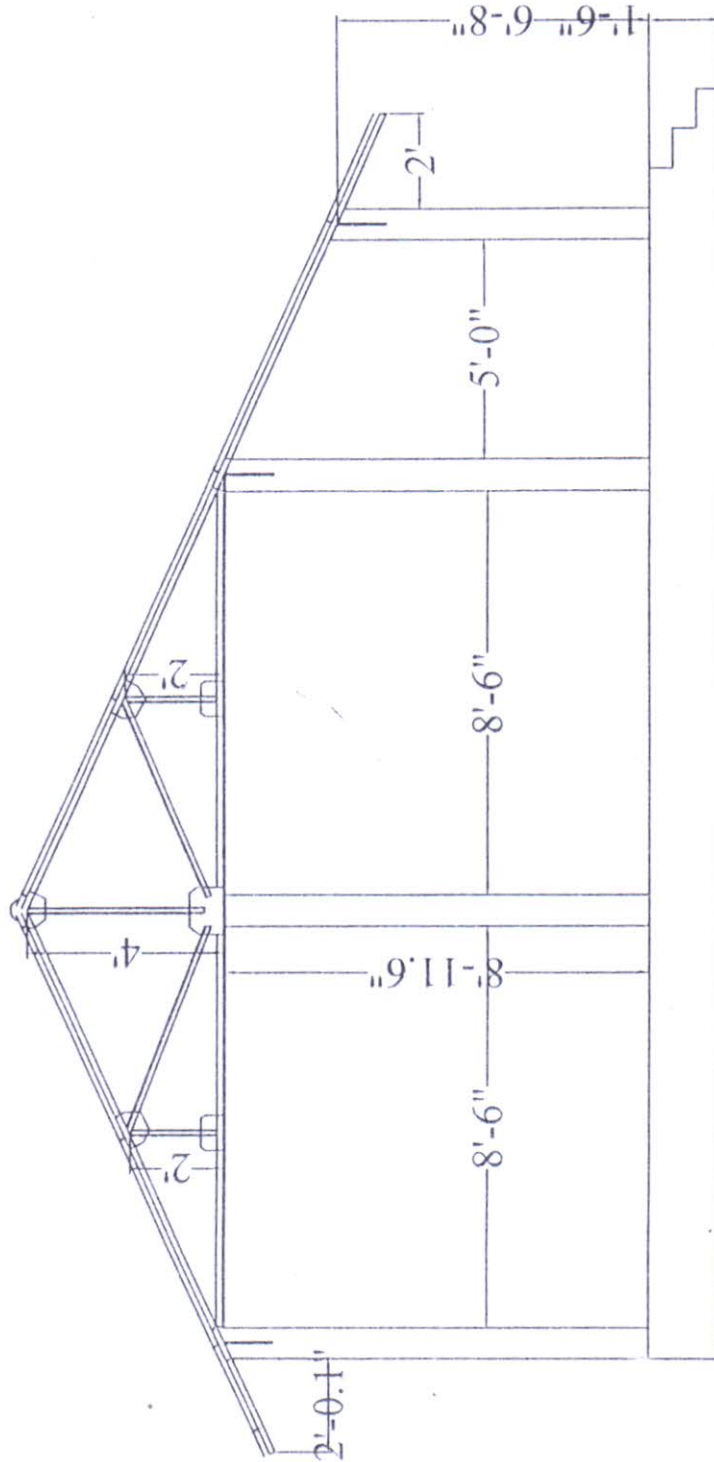
FRONT ELEVATION



PLAN

Community Center

(ASRAYAN-2 PROJECT)

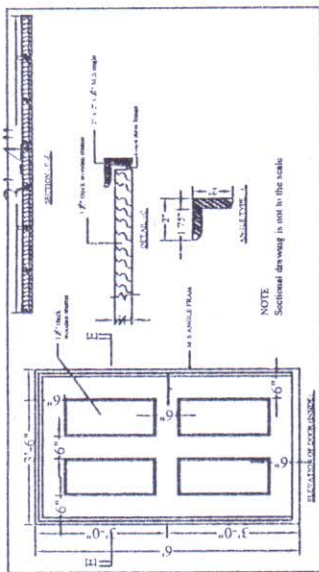
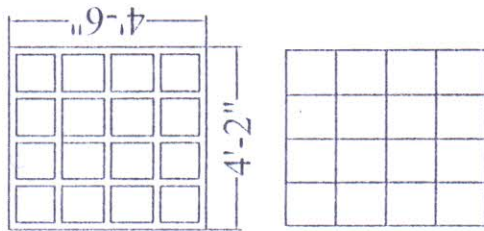
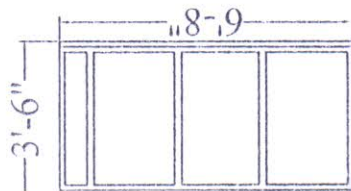


NOTE

- 1/4" X 3/8" WIND TIE
- 2" X 2" X 1/4" ANGLE FOR TIE
- 1.5" X 1.5" X 1/4" ANGLE FOR STURT & POST
- 1.25" X 1.25" X 1/4" ANGLE FOR CLEAT
- 1/4" THICK BASE PLATE
- 1/2" ϕ ANCHOR BOLT
- 1.5" X 1.5" X 1/4" ANGLE FOR PURLIN

TRUSS FOR COMMUNITY CENTER

Door & Window Sections of Community Center
(ASRAYAN-2 PROJECT)



SIZE OF DOOR & WINDOW
 D1 = 3'-6" X 6'-6"
 D2 = 3'-0" X 6'-6"
 D3 = 2'-6" X 6'-6"
 W = 4'-0" X 4'-6"
 PLINTH AREA = 795 SFT

36

Sections of Community Center

(ASRAYAN-2 PROJECT)

